

## MS and PhD Programs

Biochemistry & Molecular Biology MS, PhD  
Biostatistics & Epidemiology MS, PhD  
Cell Biology PhD  
Clinical & Translational Science MS  
Communication Sciences & Disorders MS, PhD  
Genetic Counseling MS  
Health Promotion Sciences MS, PhD  
Medical Dosimetry MS  
Microbiology & Immunology PhD  
Neuroscience MS, PhD  
Nursing PhD  
Nutritional Sciences MS, PhD  
Occupational & Environmental Health MS, PhD  
Orthodontics MS  
Pathology MS, PhD  
Periodontics MS  
Pharmaceutical Sciences MS, PhD  
Physiology MS, PhD  
Radiological Sciences MS, PhD  
Rehabilitation Sciences PhD

## Interdisciplinary and Dual Degree Programs

Graduate Program in Biomedical Sciences  
Combined MD/PhD  
Combined PharmD/MS



## Oklahoma City

From elegant to off-beat, Oklahoma City has a place for everyone. It's a growing city where miles of bike trails connect award-winning parks, business districts, historic neighborhoods, and suburbs. It's a place where people greet you with a smile and go out of their way to help. It's a place where the low cost of living gives graduate students a high quality of life. If you'd like to learn more about the culture, entertainment, sports, and life in OKC, please visit [abetterlifeokc.com](http://abetterlifeokc.com).

## OUHSC Graduate College

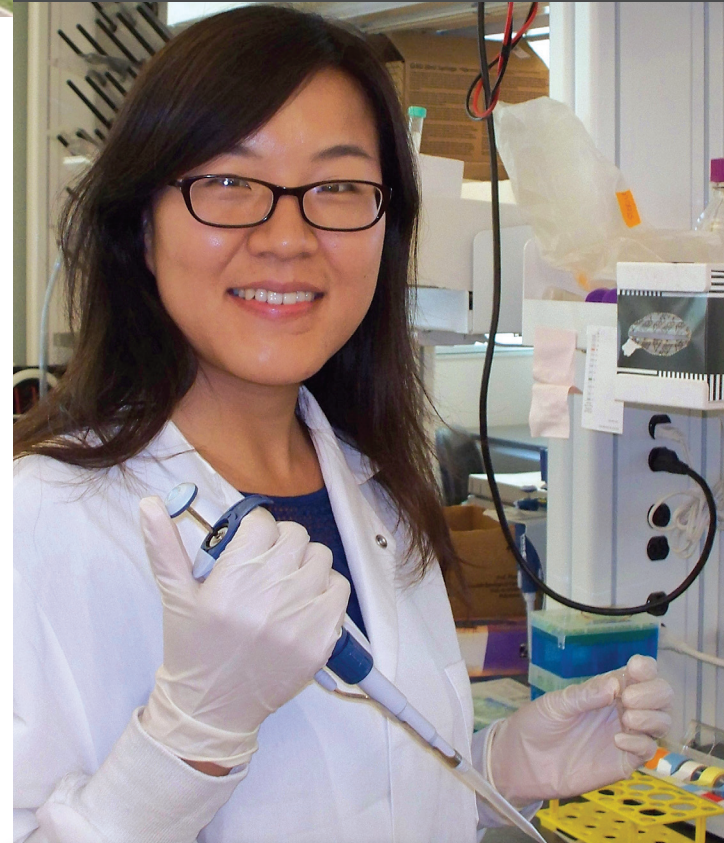
1105 N. Stonewall • LIB Room 258  
Oklahoma City, OK 73117  
405-271-2085

Web: [graduate.ouhsc.edu](http://graduate.ouhsc.edu)

E-mail: [gradcollege@ouhsc.edu](mailto:gradcollege@ouhsc.edu)

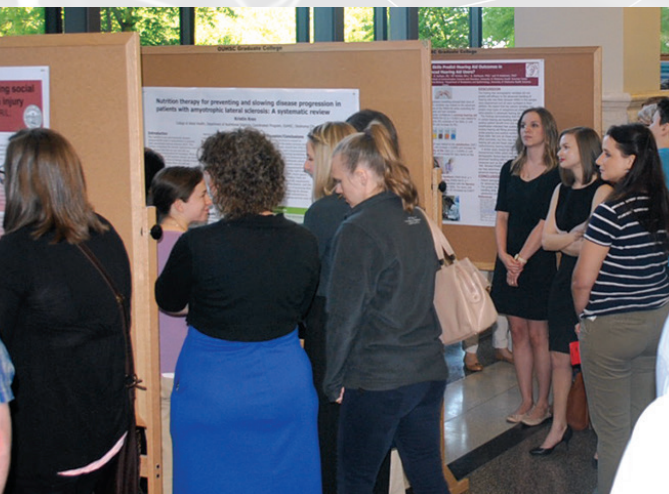


The UNIVERSITY of OKLAHOMA  
Health Sciences Center

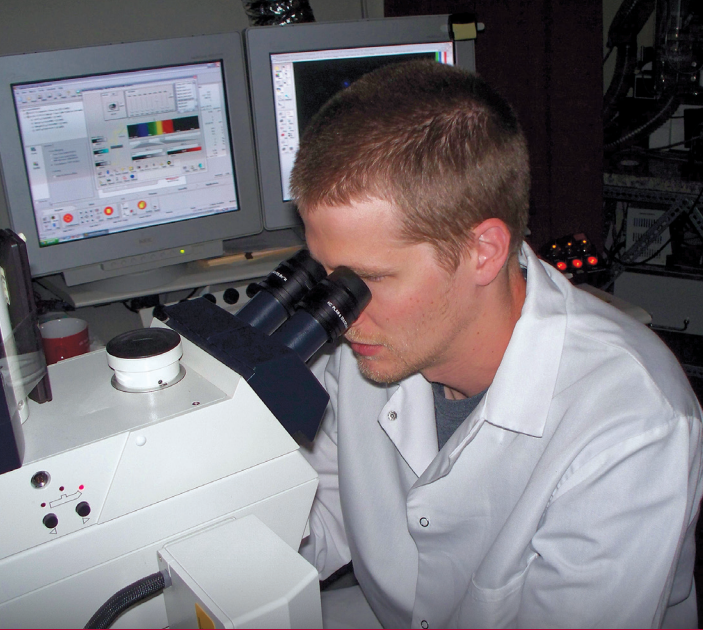


GRADUATE COLLEGE

*The University of Oklahoma is an equal opportunity institution. This publication is issued by OUHSC. XXX copies were distributed at a cost of \$XXX.XX to the taxpayers of the State of Oklahoma. Contents of this publication are subject to revision without notice. The provisions of this publication do not constitute a contract, expressed or implied between any applicant, student, or faculty member of the Graduate College. Printed fall 2017.*



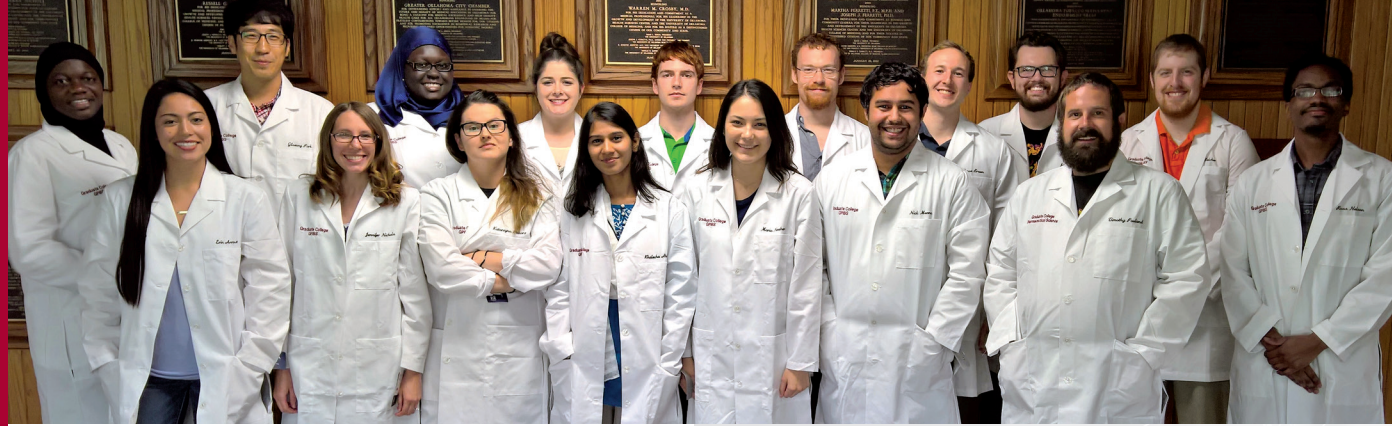




## Academic Excellence

The Graduate College at the OU Health Sciences Center trains world-class biomedical researchers through 32 nationally and internationally recognized graduate degrees. With renowned faculty and state-of-the-art facilities, our students have made important findings in the areas of cancer, diabetes, immunology, infectious diseases, neuroscience, and more.

We are one of the only campuses in the nation to offer a comprehensive set of biomedical training programs: Allied Health, Dentistry, Medicine, Nursing, Pharmacy, and Public Health. In addition, our graduate students are encouraged to train with faculty at neighboring institutions, from cutting-edge biotechnology companies to government agencies, health care systems, and an internationally recognized private research center, the Oklahoma Medical Research Foundation. This gives our students a competitive advantage as they gain cross-disciplinary training and learn to perform research alongside scientists and professionals from multiple disciplines.



### Culture of Service

Beyond our commitment to high-quality science, we believe in using research to improve the health of Oklahoma's citizens. With this focus, we are developing new technologies and infrastructure to ensure that our research can be translated into better care for patients across the State and nation.

### Innovative Partnerships

The faculty at OUHSC collaborate with leading research groups nationally and internationally, and we have also built innovative partnerships right here in Oklahoma. Our researchers partner with tribal health groups, community health advocates, public health agencies, and primary care networks to study questions that affect our population's health.

### Boundless Opportunity

At OUHSC, professional development begins early. Graduate students participate in campus leadership, serve alongside faculty on academic committees, and organize an annual research symposium where students present their research and compete for awards. These activities have prepared our graduates for successful careers in research, academic administration, pharmaceutical development, biotechnology leadership, government, and more.

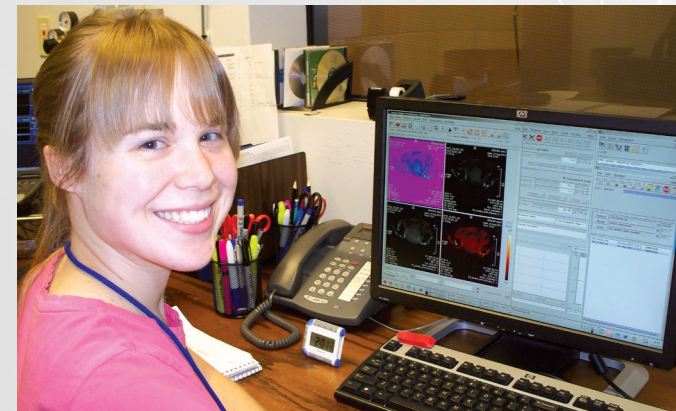
### Admission

Admission policies are program-specific. Please contact the Graduate College for detailed information.

### Tuition and Fees

Tuition and fees are set yearly. Visit our website for current information:

[www.ouhsc.edu/financialservices/bursar/tuition\\_fees.asp](http://www.ouhsc.edu/financialservices/bursar/tuition_fees.asp)



### Funding Your Education

Graduate assistantships, fellowships, and scholarships are available to help fund your graduate education. Graduate assistants receive a tuition waiver, health insurance, and a yearly stipend of \$6,000 to \$26,000.

[graduate.ouhsc.edu/ProspectiveStudents/FundingYourEducation.aspx](http://graduate.ouhsc.edu/ProspectiveStudents/FundingYourEducation.aspx)